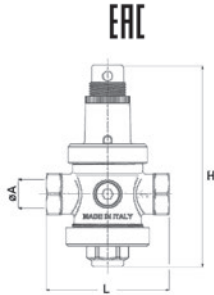


# SARACINESCHE e RACCORDI

## GATE VALVES AND FITTINGS

### H0075

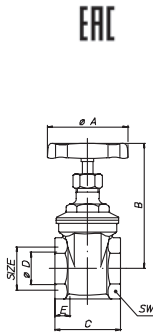


CODICE CODE	MISURA SIZE	PN Bar	OUTLET PRESSURE RANGE Bar	øA	H	L	Box Crt
H0075N04	1/2"	15	1-4	15	120	75	1/30
H0075N05	3/4"	15	1-4	20	150	85	1/30
H0075N06	1"	25	0,5-6	25	160	90	1/10
H0075N07	1 1/4"	25	0,5-6	32	220	115	1/5
H0075N08	1 1/2"	25	0,5-6	40	220	125	1/5
H0075N09	2"	25	0,5-6	50	250	140	1/3

Riduttore di pressione a pistone. Attacco manometro 1/4. Filettatura F/F UNI ISO 228.  
 Piston pressure reduction valve. Gauge connection 1/4 and connection F/F UNI ISO 228.

Temperatura: Max 80°C  
 Temperature: Max 80°C

### H0011

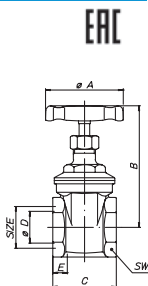


CODICE CODE	MISURA SIZE	PN Bar	øA	B	C	øD	E	SW	Box Crt
H0011S02	1/4" (DN13)	16	45	66	36	11	8	19	20/120
H0011S03	3/8" (DN13)	16	45	66	38	13	9	22	20/120
H0011S04	1/2" (DN15)	16	45	68	38	15	9	26	20/100
H0011S05	3/4" (DN19)	16	50	78	45	19	10	32	20/60
H0011S06	1" (DN24)	16	55	92	48	24	11	39	10/50
H0011S07	1 1/4" (DN32)	16	60	108	51	32	11	48	10/30
H0011S08	1 1/2" (DN37)	16	70	125	58	37	13	56	5/20
H0011S09	2" (DN47)	16	80	145	62	47	13	67	5/15
H0011S10	2 1/2" (DN60)	16	100	175	76	60	16	84	1/8
H0011S11	3" (DN72)	16	100	200	80	72	16	94	1/7
H0011S12	4" (DN93)	16	120	240	96	93	19		1/4

Saracinesca in bronzo, sabbiata. Filettatura F/F UNI ISO 228.  
 Gate valve in bronze, sandblasted. Connection F/F UNI ISO 228.

Temperatura: Max 80°C  
 Temperature: Max 80°C

### H0012

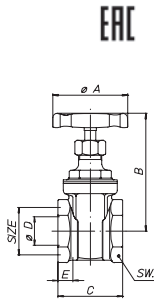


CODICE CODE	MISURA SIZE	PN Bar	øA	B	C	øD	E	SW	Box Crt
H0012S03	3/8" (DN13)	16	45	67	33	13	8	22	20/120
H0012S04	1/2" (DN15)	16	45	68	38	15	9	27	20/100
H0012S05	3/4" (DN19)	16	50	78	44	19	10	33	20/80
H0012S06	1" (DN24)	16	55	91	48	24	11	40	10/50
H0012S07	1 1/4" (DN32)	16	60	108	51	32	12	48	10/30
H0012S08	1 1/2" (DN37)	16	70	125	58	37	13	56	5/25
H0012S09	2" (DN47)	16	80	143	63	47	13	67	5/15
H0012S10	2 1/2" (DN60)	16	100	175	64	60	13	83	1/11
H0012S11	3" (DN71)	16	100	200	74	72	14	94	1/9
H0012S12	4" (DN91)	16	120	235	84	93	16	123	1/4

Saracinesca in **ottone pesante** stampata, sabbiata. Filettatura F/F UNI ISO 228.  
 Gate valve in forged **heavy brass**, sandblasted. Connection F/F UNI ISO 228.

Temperatura: Max 80°C  
 Temperature: Max 80°C

## H0013



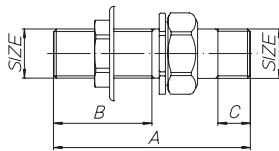
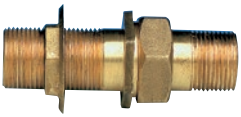
ERL

CODICE CODE	MISURA SIZE	PN Bar	øA	B	C	øD	E	SW	Box Crt
H0013S04	½" (DN13,5)	10	45	68	35	13,5	9	26	20/100
H0013S05	¾" (DN15,5)	10	45	68	39	15,5	9	32	20/100
H0013S06	1" (DN17)	10	50	80	43	19	10	39	20/60
H0013S07	1"¼ (DN27)	10	55	86	48	27	10	48	10/40
H0013S08	1"½ (DN33)	10	60	107	54	33	11	56	10/30
H0013S09	2" (DN45)	10	70	134	58	45	12	67	5/20
H0013S10	2"½ (DN47)	10	70	143	63	47	13	-	1/15
H0013S11	3" (DN60)	10	100	175	73	60	13	94	1/10
H0013S12	4" (DN72)	10	100	202	80	72	15	-	1/7

Temperatura: Max 80°C  
Temperature: Max 80°C

Saracinesca in ottone leggera stampata, sabbiata. Filettatura F/F UNI ISO 228.  
Gate valve in forged light brass, sandblasted. Connection F/F UNI ISO 228.

## H0061

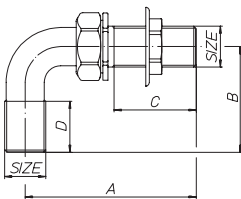
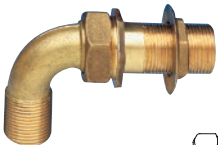


ERL

CODICE CODE	MISURA SIZE	PN Bar	A	B	C	Box Crt
H0061S03	⅜"	-	65	24	12	20/100
H0061S04	½"	-	73	27,5	16	20/100
H0061S05	¾"	-	87	40	16,5	15/60
H0061S06	1"	-	98	40	20	10/20
H0061S07	1"¼	-	95	34	23	10/20
H0061S08	1"½	-	105	33	25	5/20
H0061S09	2"	-	115	36	28	5/10

Raccordo diritto per cassone, sabbiato. Filettatura F/F UNI ISO 228.  
Straight fitting for tanks, sandblasted. Connection F/F UNI ISO 228.

## H0063

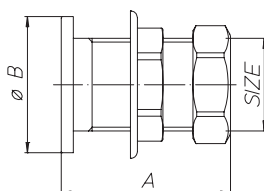
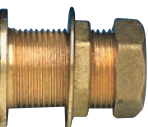


ERL

CODICE CODE	MISURA SIZE	PN Bar	A	B	C	D	Box Crt
H0063S04	½"	-	76	53	32	26	12/24
H0063S05	¾"	-	95	51	41	27	10/20
H0063S06	1"	-	99	53,5	37	26	10/20

Raccordo curvo per cassone, sabbiato. Filettatura F/F UNI ISO 228.  
Angle fitting for tanks, sandblasted. Connection F/F UNI ISO 228.

## H0067

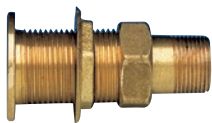


ERL

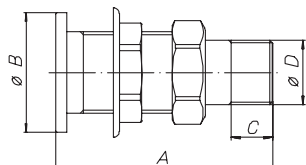
CODICE CODE	MISURA SIZE	PN Bar	A	øB	Box Crt
H0067S04	½"	-	51	33,5	20/100
H0067S05	¾"	-	56	40	20/100
H0067S06	1"	-	60	80	10/50
H0067S07	1"¼	-			10/50
H0067S08	1"½	-			5/25
H0067S09	2"	-			5/20

Raccordo per cassone con tappo, sabbiato. Filettatura F/F UNI ISO 228.  
Fitting with cap for tanks, sandblasted. Connection F/F UNI ISO 228.

## H0069



ERC



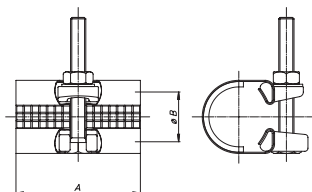
CODICE CODE	MISURA SIZE	PN Bar	A	øB	C	øD	Box Crt
H0069S04	1/2"	-	73	33,5	14	3/8"	20/100
H0069S05	3/4"	-	79	40	15	1/2"	20/40
H0069S06	1"	-	88	48	16	3/4"	15/30

Raccordo per cassone con codola, sabbiato. Filettatura F/F UNI ISO 228.  
Fitting with tail for tanks, sandblasted. Connection F/F UNI ISO 228.

## H0324



ERC



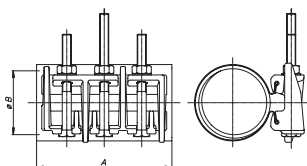
CODICE CODE	MISURA SIZE	PN Bar	A	øB	Box Crt
H0324X21	25	-	80	21-25	6/30
H0324X23	28	-	80	26-30	6/30
H0324X25	32	-	80	29-33	5/25
H0324X26	35	-	80	33-37	5/25
H0324X28	40	-	80	38-42	5/25
H0324X29	44	-	80	42-45	5/20
H0324X31	50	-	80	48-51	5/20
H0324X34	63	-	80	60-64	3/12
H0324X36	75	-	80	71-76	3/12
H0324X38	90	-	80	87-93	3/6
H0324X40	110	-	80	105-111	3/6

Collare di riparazione ad un tirante in acciaio inox/NBR per tubi.  
Repair collar for pipes in stainless steel/NBR with a single tie rod

## H0326



ERC



CODICE CODE	MISURA SIZE	PN Bar	DN	A	øB	Box Crt
H0326X31	50 mm	-	1/2"	200	48-56	5/5
H0326X34	63 mm	-	2"	200	60-68	1/1
H0326X36	75 mm	-	2 1/2"	200	68-78	1/1
H0326X38	90 mm	-	3"	200	88-98	1/1
H0326X40	110 mm	-	4"	200	108-118	1/1

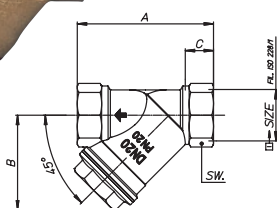
Tempi di consegna da concordare Delivery time to be agreed

Collare di riparazione a tre tiranti in acciaio inox/NBR per tubi.  
Repair collar for pipes in stainless steel/NBR with three tie rods.

## H0400



ERC



CODICE CODE	MISURA SIZE	PN Bar	FILTRO FILTER	EMPTY FULL%	A	B	C	SW	Box Crt
H0400S03	3/8" (DN10)	20	400 µm	38%	55	40	10	21	20/120
H0400S04	1/2" (DN15)	20	400 µm	38%	58	40	12	25	20/120
H0400S05	3/4" (DN20)	20	400 µm	38%	70	50	13	31	20/60
H0400S06	1" (DN25)	20	400 µm	38%	87	60	17	38	10/40
H0400S07	1 1/4" (DN32)	20	500 µm	48%	96	68	15	48	10/30
H0400S08	1 1/2" (DN40)	20	500 µm	48%	106	75	21	55	5/20
H0400S09	2" (DN50)	20	500 µm	48%	126	90	22	68	2/14

Raccogliatore di impurità a «Y» con filtro per acqua, in ottone sabbiato.  
Y-strainer with water filter, in sandblasted brass.

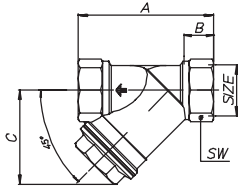
Temperatura: Max 80°C  
Temperature: Max 80°C

# SARACINESCHE E RACCORDI

# GATE VALVES AND FITTINGS

## H0401

ERL



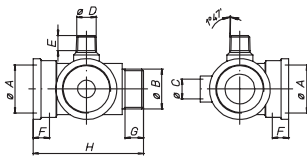
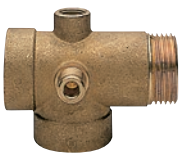
Temperatura: Max 80°C  
Temperature: Max 80°C

CODICE CODE	MISURA SIZE	PN Bar	FILTRO FILTER	EMPTY FULL%	A	B	C	SW	Box Crt
H0401S03	3/8" (DN10)	20	400 µm	38%	55	10	40	21	20/100
H0401S04	1/2" (DN15)	20	400 µm	38%	58	12	40	25	20/100
H0401S05	3/4" (DN20)	20	400 µm	38%	70	13	50	31	12/60
H0401S06	1" (DN25)	20	400 µm	38%	87	17	60	38	10/40
H0401S07	1" 1/4 (DN32)	20	500 µm	48%	96	15	68	48	10/20
H0401S08	1" 1/2 (DN40)	20	500 µm	48%	106	21	75	55	5/20
H0401S09	2" (DN50)	20	500 µm	48%	126	22	90	68	2/12
H0401S10	2" 1/2 (DN65)	16	600 µm	50%	145	24	100	85	1/8
H0401S11	3" (DN80)	16	600 µm	50%	165	26	118	99	1/6
H0401S12	4" (DN100)	16	600 µm	50%	215	27	170	126	1/2

Raccoglitore di impurità a «Y» con filtro per acqua, in **bronzo** sabbiato  
Y-strainer with water filter, in sandblasted **bronze**.

## H0600

ERL

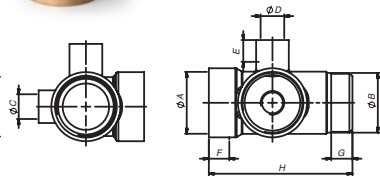


CODICE CODE	MISURA SIZE	PN Bar	øA	øB	øC	øD	E	F	G	H	Box Crt
H0600S06	1" 1/4	-	1"	1"	1/4	1/4	9,7	13	11,7	79	8/40

Raccordo a 5 vie per pompe autoclavi, maschio/femmina, sabbiato.  
5-way fitting for autoclaves, mael/female, sandblasted.

## H0601

ERL



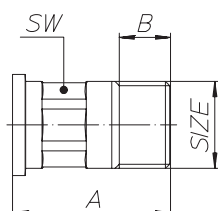
CODICE CODE	MISURA SIZE	PN Bar	øA	øB	øC	øD	E	F	G	H	Box Crt
H0601S06	1"	-	1"	1"	1/4	1/4	13	13	11,7	79	8/40

[Tempi di consegna da concordare](#) Delivery time to be agreed

Raccordo a 5 vie femmina/femmina, per pompe autoclavi, sabbiato.  
Female/female 5-way fitting for autoclaves, sandblasted.

## H0611

ERL



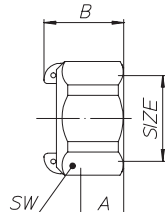
CODICE CODE	MISURA SIZE	PN Bar	A	B	SW	Box Crt
H0611S04	1/2"	-	37	13,5	17	50/250
H0611S05	3/4"	-	39	16	28	50/250
H0611S06	1"	-	46	18,5	30	15/75
H0611S07	1" 1/4	-	56	21	37	10/50
H0611S08	1" 1/2	-	66	23	44	10/40
H0611S09	2"	-	76	29	55	6/24

Cannotto fil. maschio con sede piana per contatore acqua, sabbiato. Filettatura F/F UNI ISO 228.  
Tail with flat seat for water meter, male threaded, sandblasted. Connection F/F UNI ISO 228.

## H0613



ERL



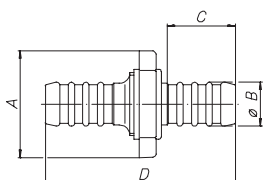
CODICE CODE	MISURA SIZE	PN Bar	A	B	SW	Box Crt
H0613S05	¾"	-	13	20	29	50/250
H0613S06	1"	-	17	27	36	50/250
H0613S07	1¼"	-	18	27	46	15/75
H0613S08	1½"	-	18	27	53	10/50
H0613S09	2"	-	19	31	69	10/50
H0613S10	2½"	-	23	31	84	6/30

Girello fil. femmina per contatore acqua, sabbaiato. Filettatura F/F UNI ISO 228.  
Nut for water meter, female threaded, sandblasted. Connection F/F UNI ISO 228.

## E0160



ERL



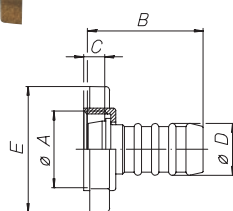
CODICE CODE	MISURA SIZE	PN Bar	A	øB	C	D	Box Crt
E0160S11	15 mm	10	45	16	27,5	85	30/150
E0160S16	20 mm	10	51	21	32	91	20/100
E0160S21	25 mm	10	60	26	32	100	10/50
E0160S24	30 mm	10	67	31	39	123	8/40

Raccordo per tubo gomma completo, sabbaiato.  
Complete fitting for rubber hose, sandblasted.

## E0164



ERL

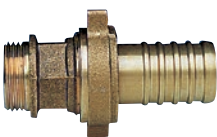


CODICE CODE	MISURA SIZE	PN Bar	øA	B	C	øD	E	Box Crt
E0164S11	15 mm	-	¾"	42	8,2	16	45	40/200
E0164S16	20 mm	-	7/8"	47	9,7	21	51	30/150
E0164S21	25 mm	-	37,5x8	52	10,4	26	60	20/100
E0164S24	30 mm	-	41,5x8	63	11,9	31	67	15/75
E0164S26	40 mm	-	52x8	74	13,9	41	82	10/40
E0164S28	50 mm	-	66,6x8	80	14,9	51	100	6/24

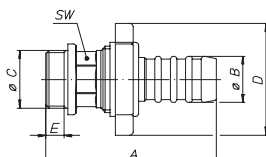
Mezzo raccordo maschio con girello, sabbaiato.  
Half fitting with nut, male threaded, sandblasted.

## E0166

RACCORDO FITTING



ERL



CODICE CODE	MISURA SIZE	PN Bar	A	øB	øC	D	E	SW	Box Crt
E0166S67	½"x15 mm	10	65	16	½"	45	7,2	18,5	30/150
E0166S68	¾"x20 mm	10	77,5	21	¾"	51	8,2	22	20/100
E0166S69	¾"x25 mm	10	84,5	26	¾"	60	8,2	27	20/40
E0166S70	1"x25 mm	10	87	26	1"	60	9,7	27	12/60
E0166S71	1"x30 mm	10	101	31	1"	67	9,7	30,5	10/50
E0166S72	1¼"x30 mm	10	102,5	31	1¼"	67	10,7	30,5	10/50
E0166S73	1¼"x35 mm	10	106,5	36	1¼"	74	10,7	35	8/32
E0166S75	1½"x40 mm	10	116,5	41	1½"	82	11,7	39	8/16
E0166S79	2"x50 mm	10	128,5	51	2"	100	13,2	56	3/12

Raccordo diritto per pompa tipo excelsior, sabbaiato.  
Straight fitting for excelsior pump, sandblasted.

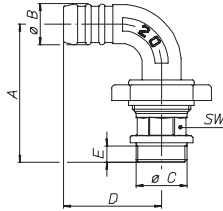
# SARACINESCHE E RACCORDI

## GATE VALVES AND FITTINGS

### E0168



ERAC



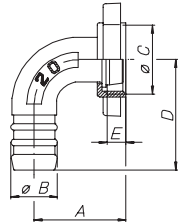
CODICE CODE	MISURA SIZE	PN Bar	A	øB	øC	D	E	SW	Box Crt
E0168S68	¾"x20 mm	10	70,5	21	½"	45	7,2	18,5	12/60
E0168S69	¾"x25 mm	10	79,5	26	¾"	51	8,2	22	12/48
E0168S70	1"x25 mm	10	82	26	1"	60	8,2	27	8/40
E0168S71	1"x30 mm	10	90	31	1"	60	9,7	27	6/30
E0168S72	1¼"x30 mm	10	91,5	31	1¼"	67	9,7	30,5	6/30
E0168S73	1¼"x35 mm	10	99,5	36	1¼"	67	10,7	30,5	6/24
E0168S75	1½"x40 mm	10	108,5	41	1½"	74	10,7	35	4/16
E0168S79	2"x50 mm	10	124,5	51	2"	82	11,7	39	2/8

Raccordo curvo per pompa tipo excelsior, sabbiato.  
Angle fitting for excelsior pump, sandblasted.

### E0170



ERAC



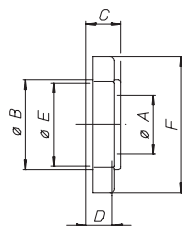
CODICE CODE	MISURA SIZE	PN Bar	A	øB	øC	D	E	Box Crt
E0170S16	20 mm	-	40	21	7/8"	50	9,5	20/180
E0170S21	25 mm	-	47	26	37,5x8	55	10,5	15/120
E0170S24	30 mm	-	52	26	41,5x8	67	10,5	10/80
E0170S25	35mm	-	60	31	46,7x8	72	12	8/48
E0170S26	40 mm	-	66	41	52x8	87	13	6/24
E0170S28	50 mm	-	76	51	66,6x8	101,5	13	4/16

Curva per pompa excelsior con girello, sabbiato.  
Elbow for excelsior pump with nut, sandblasted.

### E0685



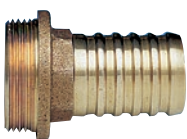
ERAC



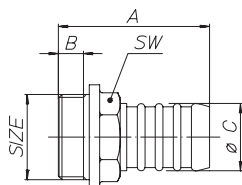
CODICE CODE	MISURA SIZE	PN Bar	A	øB	C	D	øE	F	Box Crt
E0685S11	15 mm	-	16,5	29	12	8,2	3/4"	45	50/250
E0685S16	20 mm	-	22	33,5	13	9,7	7/8"	51	50/250
E0685S21	25 mm	-	30	41	16	10,4	37,5x8	60	30/150
E0685S24	30 mm	-	34,5	45	17,5	11,9	41,5x8	67	30/150
E0685S25	35mm	-	39,5	50,5	19	12,9	46,7x8	74	20/100
E0685S26	40 mm	-	44,5	56	20	13,9	52x8	82	15/75
E0685S28	50 mm	-	53	72	21	14,9	66,6x8	100	12/60

Girello per raccordi, sabbiato.  
Nut for fittings, sandblasted.

### H0523



ERAC



CODICE CODE	MISURA SIZE	PN Bar	A	B	øC	SW	Box Crt
H0523S67	½"x15 mm	-	43	9,5	15,5	20	50/250
H0523S68	¾"x20 mm	-	47,5	10	20	25	50/250
H0523S70	1"x25 mm	-	58,5	12	26	30	20/100
H0523S71	1"x30 mm	-	64,5	12	31	32	20/100
H0523S72	1¼"x30 mm	-	67	13	31	32	12/60
H0523S75	1½"x40 mm	-	80,5	14	41	43	12/48
H0523S79	2"x50 mm	-	89	15,5	51	53	8/16
H0523S82	2½"x60 mm	-	95,5	17,5	61	61	4/16
H0523S85	3"x80 mm	-	109,5	19	81	81	3/6
H0523S87	4"x100 mm	-	120,5	21,5	101	101	1/3

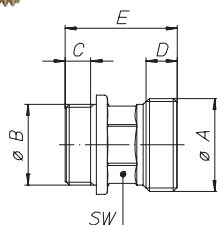
Raccordo portagomma tipo Roma, sabbiato.  
Fitting with hose connector, Roma type, sandblasted..

# SARACINESCHE E RACCORDI

GATE VALVES  
AND FITTINGS

## E0687

ERL

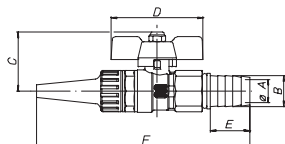


CODICE CODE	MISURA SIZE	PN Bar	øA	øB	C	D	E	SW	Box Crt
E0687S67	½"x15 mm	-	3/4"	½"	7,2	8	28	18,5	50/250
E0687S68	¾"x20 mm	-	7/8"	¾"	8,2	9	36	22	30/150
E0687S69	1"x25 mm	-	37,5x8	¾"	8,2	9	38,5	27	30/150
E0687S70	1"x30 mm	-	37,5x8	1"	9,7	9	41	27	25/125
E0687S71	1"¼ x30 mm	-	41,5x8	1"	9,7	10	44	30,5	25/125
E0687S72	1"½ x40 mm	-	41,5x8	1"¼	10,7	10	45,5	30,5	15/75
E0687S73	2"x50 mm	-	46,7x8	1"¼	10,7	11	46,5	35	15/75
E0687S75	1"½ x40 mm	-	52x8	1"½	11,7	11	50	39	12/48
E0687S79	2"x50 mm	-	66,6x8	2"	13,2	12	56	56	8/16

Vitone per pompa excelsior, sabbiato.  
Nipple for excelsior pump, sandblasted.

## H0039

ERL



CODICE CODE	MISURA SIZE	RESCA BARS	PN Bar	øA	B	C	D	E	F	Box Crt
H0039N04	½" (DN15)	ø 20	40	15	20	40	52	25	130	12/60
H0039N05	¾" (DN20)	ø 20	30	20	20	48	65	28	154	6/30

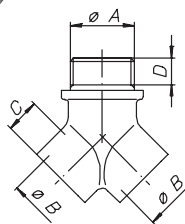
Tempi di consegna da concordare Delivery time to be agreed

Valvola a sfera con lancia e portagomma, farfalla rossa, nichelata.  
Ball valve with nozzle and hose connector, with red T-handle, nickel-plated.

Temperatura: -20°C / + 90°C  
Temperature: -20°C / + 90°C

## G0655

ERL

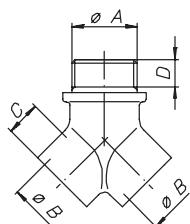


CODICE CODE	MISURA SIZE	PN Bar	øA	øB	C	D	Box Crt
G0655N04	M ½"x F ¾"	-	½"	¾"	11	8,7	1/20

Corpo bolla maschio-femmina-femmina nichelata. Filettatura F/F UNI ISO 228.  
Y-Union, male/female/female, nickel-plated. Connection F/F UNI ISO 228.

## G0657

ERL

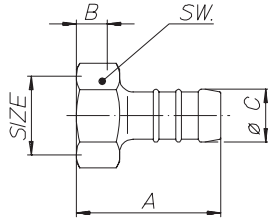
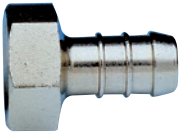


CODICE CODE	MISURA SIZE	PN Bar	øA	øB	C	D	Box Crt
G0657N03	G ¾"	-	¾"	¾"	11	7,7	25/125
G0657N34	F ½"Rp x M ½"R	-	½"	½"	14,7	13,2	25/125

Corpo bolla maschio-femmina-femmina nichelata.  
Y-Union, male/female/female, nickel-plated.

## G0659

ERC

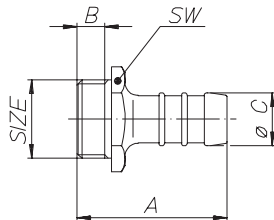
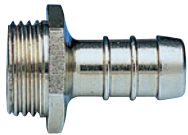


CODICE CODE	MISURA SIZE	RESCA BARS	A	B	øC	SW	Box Crt
G0659N02	¼"	Ø 10,5 mm	35	6,2	10,5	16	50/250
G0659N03	⅜"	Ø 14 mm	36	7,2	14	19	50/250
G0659N04	½"	Ø 14 mm	38,5	8,2	14	24	50/250
G0659N05	¾"	Ø 18 mm	48,5	9,2	18	24	30/150
G0659N06	1"	Ø 22 mm	58,5	10,7	22	38	25/125

Raccordo portagomma a femmina, nichelato. Filettatura F/F UNI ISO 228.  
Hose connector for gas, female, nickel-plated. Connection F/F UNI ISO 228.

## G0661

ERC

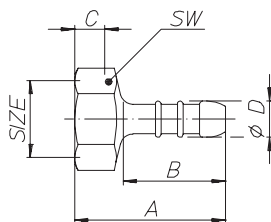


CODICE CODE	MISURA SIZE	RESCA BARS	A	B	øC	SW	Box Crt
G0661N02	¼"	Ø 10,5 mm	35,5	5,2	10,5	16	50/50
G0661N03	⅜"	Ø 14 mm	36,5	6,2	14	19	50/50
G0661N04	½"	Ø 14 mm	39,5	7,2	14	24	50/50
G0661N05	¾"	Ø 18 mm	47,5	8,2	18	24	30/150
G0661N06	1"	Ø 22 mm	60,5	9,7	22	38	25/125

Raccordo portagomma a maschio, nichelato. Filettatura F/F UNI ISO 228.  
Hose connector for gas, male, nickel-plated. Connection F/F UNI ISO 228.

## G0663

ERC

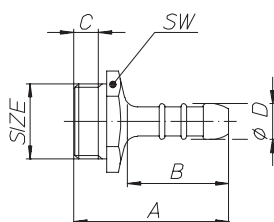
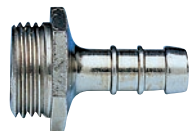


CODICE CODE	MISURA SIZE	RESCA BARS	A	B	C	øD	SW	Box Crt
G0663N03	⅜"	Ø 10,5 mm	36,5	26,6	7,2	10,5	19	50/500
G0663N04	½"	Ø 10,5 mm	39	27,3	8,2	10,5	24	50/500

Raccordo portagomma femmina, nichelato. Filettatura F/F UNI ISO 228.  
Hose connector female, nickel-plated. Connection F/F UNI ISO 228.

## G0665

ERC



CODICE CODE	MISURA SIZE	RESCA BARS	A	B	C	øD	SW	Box Crt
G0665N03	⅜"	Ø 10,5 mm	37	26,6	6,2	10,5	19	50/500
G0665N04	½"	Ø 10,5 mm	39,5	27,3	7,2	10,5	24	50/500

Raccordo portagomma. Filettatura F/F UNI ISO 228.  
Hose connector. Connection F/F UNI ISO 228.



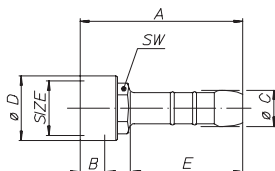
## G0881

ERL



CODICE CODE	MISURA SIZE	RESCA BARS	A	B	øC	øD	E	SW	Box Crt
G0881N04	1/2"	Ø 14 mm	63	9,7	14	25	44,5	18	15/75

Raccordo portagomma, femmina. Filettatura F/F UNI ISO 228.  
Hose connector, female. Connection F/F UNI ISO 228.



## G0883

ERL



CODICE CODE	MISURA SIZE	RESCA BARS	A	B	øC	øD	E	SW	Box Crt
G0883N04	1/2"	Ø 14 mm	63	8,7	14	25	44,5	18	25/125

Raccordo portagomma. Filettatura F/F UNI ISO 228.  
Hose connector. Connection F/F UNI ISO 228.

